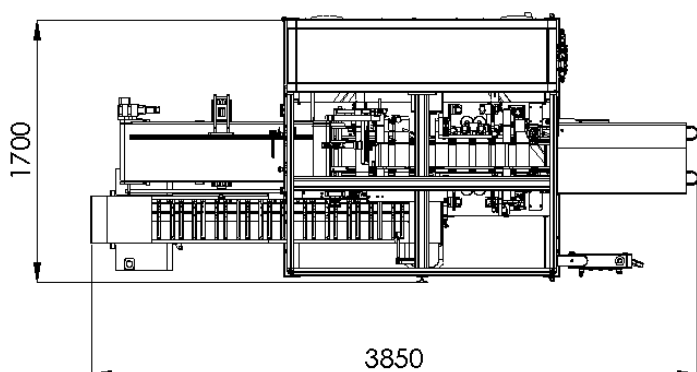
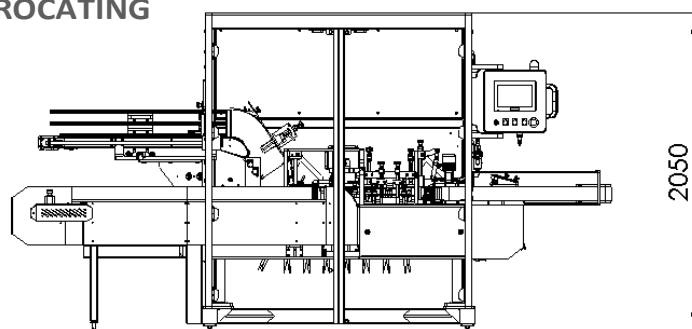


## SERVOCOMPACT is:

### A HORIZONTAL CARTONING MACHINE WITH RECIPROCATING MOVEMENT

- Quick job changeover
- Low maintenance
- Balcony design
- Electrical supply: 400 V Three phase, 16A 50Hz + Earth + Neutral
- Compressed air supply: 500 NL/min at 6 bar



### ULTRA-FAST ADJUSTMENT WITHOUT TOOLS

- Automatic or manual adjustment of digital positioning indicators

### THROUGHPUT:

Model A: 0 - 100 P/min  
 Model B: 0 - 70 P/min  
 Model C: 0 - 60 P/min



Contact us for more information!

### OPTIONAL

- Automatic product infeed
- Can be coupled with counters - dosing units - bagging units
- Pre-folded leaflet dispenser
- End-of-line conveyor
- Grouping table
- Ink-jet marking
- Automatic batch control



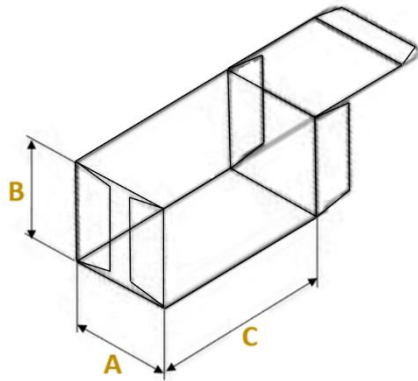
*Photo for information only*



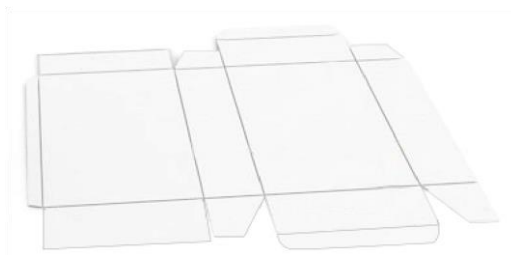
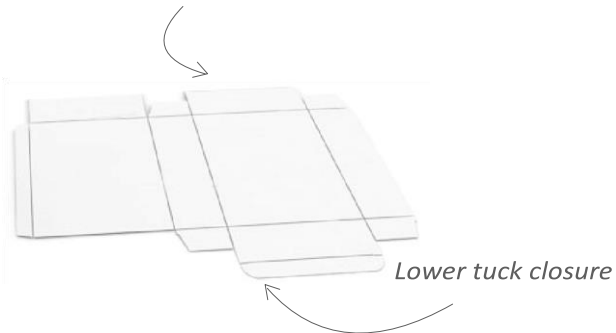
CMAS Packaging - Z.A Terrasse Garonne  
 47310 BRAX (FRANCE)

## SERVOCOMPACT CAN BE TAILOR-MADE ACCORDING TO YOUR REQUIREMENTS

- All possible combinations as per your requirements



*Glued top closure*



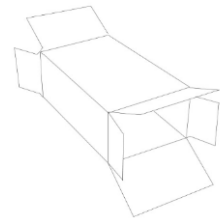
*Tuck or glue closure*

- Machine capacity:

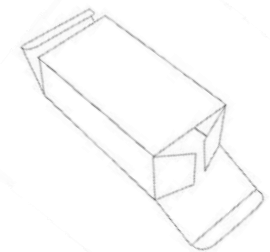
	MIN mm	MAX mm	
A	20	85	Model A
B	12	80	
C	80	250	
A	50	140	Model B
B	12	80	
C	80	250	
A	50	200	Model C
B	12	80	
C	80	300	

### For cartons with:

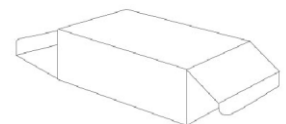
- Glued flaps



- Opposite tuck flaps



- Alternate tuck flaps



- References taken from ECMA catalogue: A5520, A2420, A2320, A2220, A2120
- Possible carton types: GC1, GZ, GC2
- For other carton types: contact us.